

Regulating Tobacco Marketing: A “Commercial Speech” Flowchart for State and Local Governments



Tobacco Control
Legal Consortium



Law. Health. Justice.

This publication is provided for educational purposes only and is not to be construed as a legal opinion or as a substitute for obtaining legal advice from an attorney. Laws cited are current as of March 2010. The Tobacco Control Legal Consortium provides legal information and education about tobacco and health, but does not provide legal representation. Readers with questions about the application of the law to specific facts are encouraged to consult legal counsel familiar with the laws of their jurisdictions.

Suggested citation:

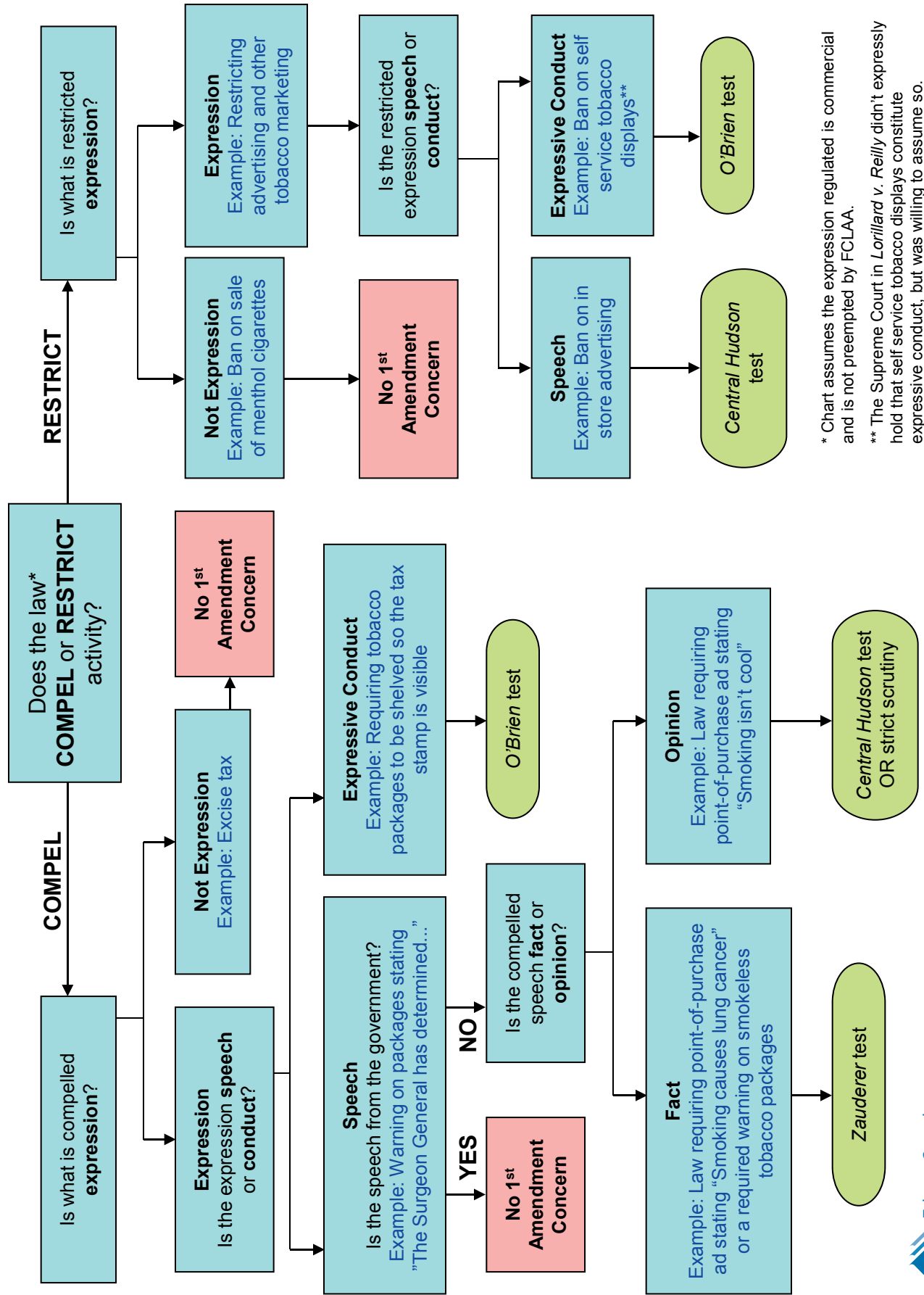
Seth E. Mermin & Elisa P. Laird-Metke, Tobacco Control Legal Consortium, *Regulating Tobacco Marketing: A "Commercial Speech" Flowchart for State and Local Governments* (2010).

Tobacco Control Legal Consortium
875 Summit Avenue
Saint Paul, Minnesota 55105 USA
tobaccolaw@wmitchell.edu
www.tobaccolawcenter.org
651.290.7506

Copyright © 2010 Tobacco Control Legal Consortium

This publication was made possible by the financial support of the American Cancer Society and the Robert Wood Johnson Foundation.

Regulating Tobacco Marketing: A "Commercial Speech" Flowchart for State and Local Governments



* Chart assumes the expression regulated is commercial and is not preempted by FCLAA.

** The Supreme Court in *Lorillard v. Reilly* didn't expressly hold that self service tobacco displays constitute expressive conduct, but was willing to assume so.

About the Tobacco Control Legal Consortium

The Tobacco Control Legal Consortium is a network of legal programs supporting tobacco control policy change throughout the United States. Drawing on the expertise of its collaborating legal centers, the Consortium works to assist communities with urgent legal needs and to increase the legal resources available to the tobacco control movement. The Consortium's coordinating office, located at William Mitchell College of Law in St. Paul, Minnesota, fields requests for legal technical assistance and coordinates the delivery of services by the collaborating legal resource centers. Our legal technical assistance includes help with legislative drafting; legal research, analysis and strategy; training and presentations; preparation of friend-of-the-court legal briefs; and litigation support.



875 Summit Avenue · St. Paul, Minnesota 55105
www.tclconline.org · tobaccolaw@wmitchell.edu · 651.290.7506